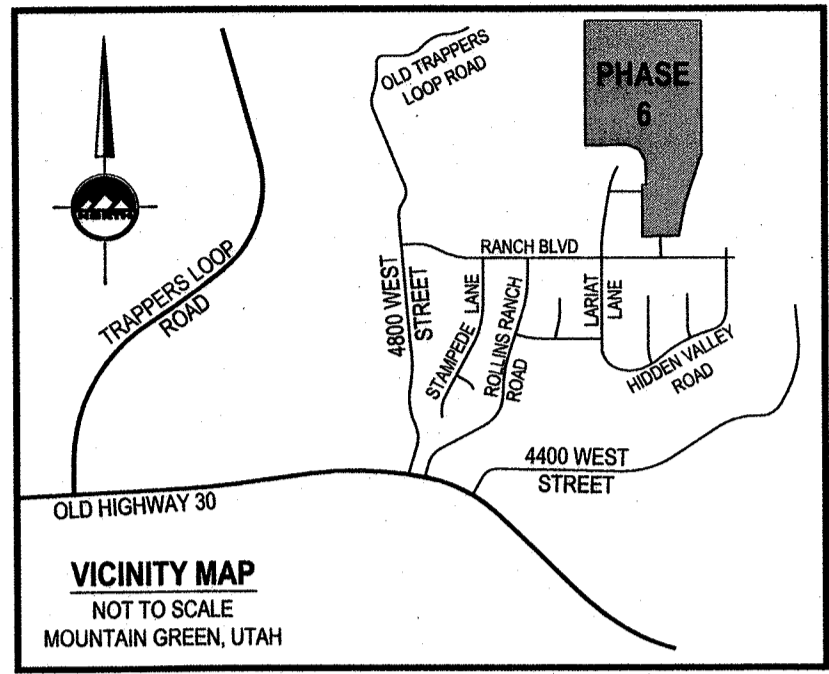
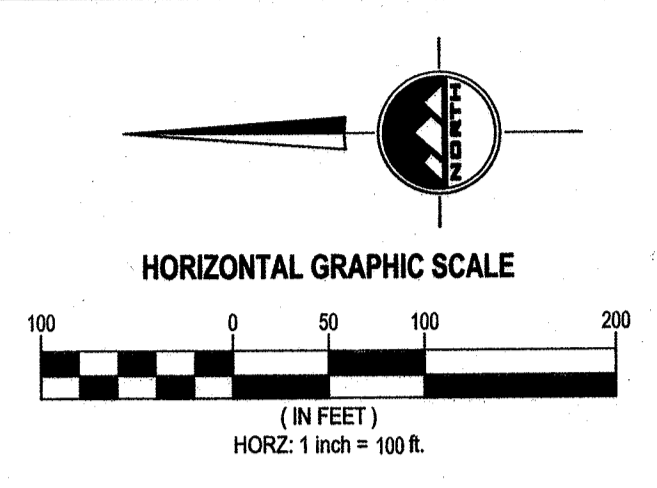
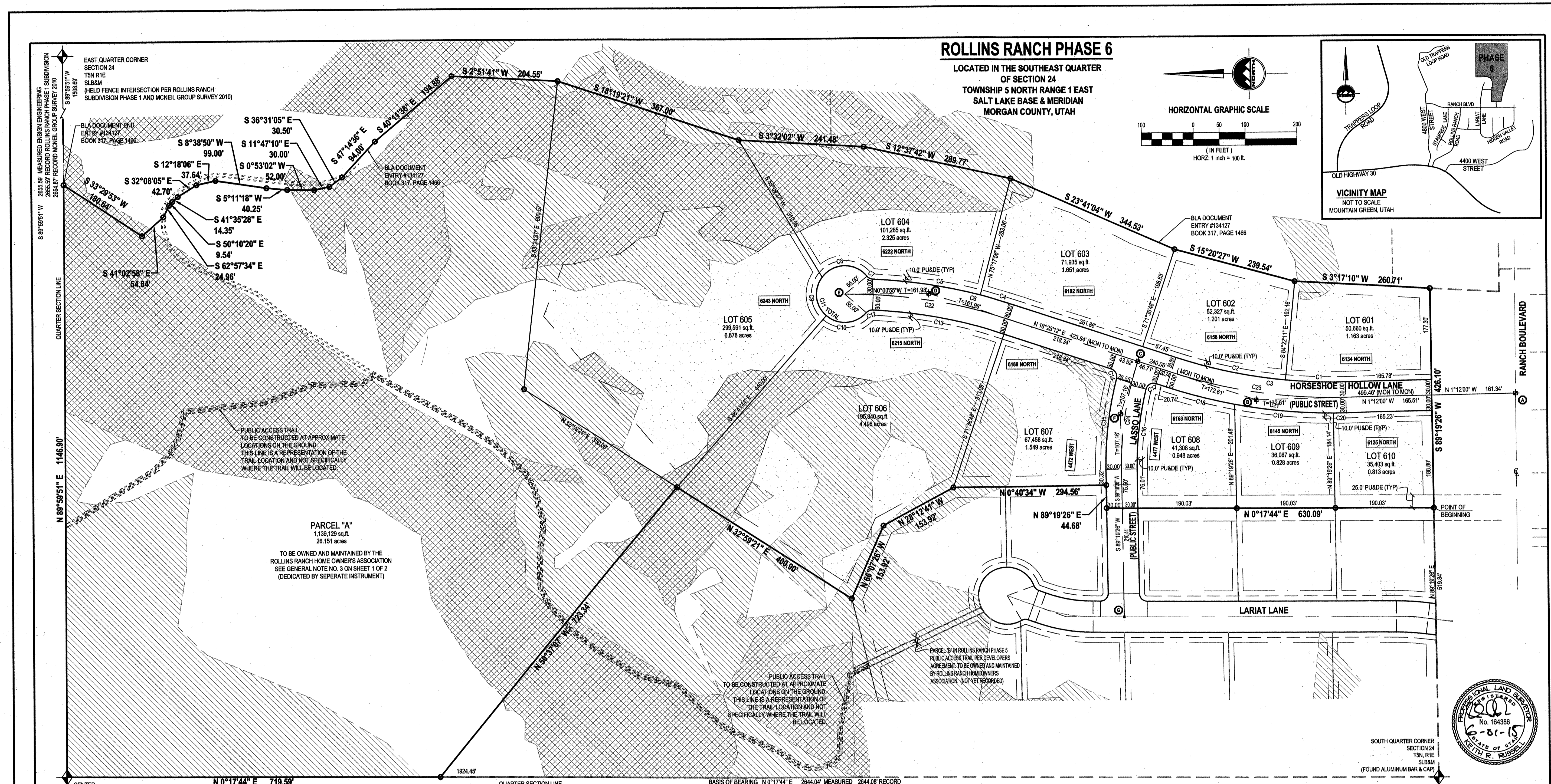


EN 135286 BK 0320 P 0890



CURVE TABLE					
CURVE	RADIUS	LENGTH	DELTA	BEARING	CHORD
C1	970.00'	115.64'	6°49'49"	S2°12'55"W	115.57'
C2	970.00'	215.96'	12°45'23"	S12°00'31"W	215.51'
C3	970.00'	331.60'	19°35'12"	S8°35'36"W	329.96'
C4	1030.00'	66.26'	3°41'08"	N16°32'38"E	66.24'
C5	1030.00'	210.52'	11°42'39"	N8°50'44"E	210.16'
C6	1030.00'	276.78'	15°23'47"	N10°41'19"E	275.95'
C7	15.00'	12.70'	48°30'31"	S27°14'41"W	12.32'
C8	55.00'	100.05'	104°13'38"	N0°36'53"W	86.82'

CURVE TABLE					
CURVE	RADIUS	LENGTH	DELTA	BEARING	CHORD
C9	55.00'	82.52'	85°58'02"	S84°17'17"W	75.00'
C10	55.00'	86.16'	89°46'38"	S3°34'33"E	77.62'
C11	55.00'	268.73'	279°57'18"	N88°28'43"W	70.74'
C12	15.00'	13.50'	51°35'06"	N22°39'49"W	13.05'
C13	970.00'	258.31'	15°15'28"	N10°45'28"E	257.55'
C14	15.00'	22.57'	86°13'24"	N61°29'54"E	20.50'
C15	668.19'	178.27'	15°17'10"	N83°01'59"W	177.74'
C16	608.19'	156.17'	14°42'43"	N83°19'12"W	155.74'

CURVE TABLE					
CURVE	RADIUS	LENGTH	DELTA	BEARING	CHORD
C17	15.00'	24.70'	94°21'03"	N28°47'19"W	22.00'
C18	1030.00'	135.95'	7°33'45"	S14°38'20"W	135.85'
C19	1030.00'	191.39'	10°38'46"	S5°30'04"W	191.11'
C20	1030.00'	24.77'	1°22'41"	S0°30'39"E	24.77'
C21	1030.00'	352.11'	19°35'12"	S8°35'38"W	350.40'
C22	1000.00'	321.17'	18°24'07"	N9°11'08"E	319.80'
C23	1000.00'	341.85'	19°35'12"	S8°35'38"W	340.19'
C24	638.19'	212.33'	19°03'46"	N81°08'41"W	211.35'

MONUMENT TABLE		
POINT	BEARING	DISTANCE
A TO B	N 1°12'00" W	499.46'
B TO C	N 18°23'12" E	240.06'
C TO D	N 18°23'12" E	423.84'
D TO E	N 0°00'59" W	161.98'
E TO F	N 71°36'48" W	107.16'
F TO G	S 89°19'26" W	393.10'

MONUMENT NOTES:
 1) EXISTING MONUMENT AT LOCATION "A" IN PHASE 1.
 2) MONUMENTS INSTALLED AT LOCATIONS "B" "C" "D".
 3) NO MONUMENT INSTALLED AT LOCATION "E" DUE TO SEWER MANHOLE IN ROAD.
 4) FUTURE MONUMENT TO BE INSTALLED AT LOCATION "G" IN FUTURE PHASE 5.

LEGEND

- SECTION CORNER
- EXISTING STREET MONUMENT
- FUTURE STREET MONUMENT
- SET 5/8" REBAR WITH YELLOW PLASTIC CAP, STAMPED "ENSGN ENG. & LAND SURV." HAS BEEN SET AT ALL REAR CORNER LOCATIONS.
- P.U.D.E. = PUBLIC UTILITY & DRAINAGE EASEMENT
- EASEMENTS
- RESTRICTED BUILD AREA (15% - 25% SLOPE)
- UNBUILDABLE AREA (25% OR STEEPER SLOPE)
- RESIDENTIAL BUILDING ENVELOPE

DEVELOPER
ROLLINS RANCH LLC
 90 SOUTH 400 WEST SUITE 330
 SALT LAKE CITY, UTAH 84101

ROLLINS RANCH PHASE 6

LOCATED IN THE SOUTHEAST QUARTER OF SECTION 24
 TOWNSHIP 5 NORTH RANGE 1 EAST
 SALT LAKE BASE & MERIDIAN
 MORGAN COUNTY, UTAH

SHEET 2 OF 2

PROJECT NUMBER: 4063W
 MANAGER: B. ELDER
 DRAWN BY: M. MELMER
 CHECKED BY: KRUSSELL
 DATE: 4/22/14

MORGAN COUNTY RECORDER

ENTRY NO. 135286 FEE PAID \$72.00 FILED FOR RECORD AND RECORDED THIS 24 DAY OF June 2015 AT 1:44 IN BOOK 320 OF OFFICIAL RECORDS PAGE 659

MORGAN COUNTY RECORDER
 DEPUTY RECORDER
 Chris Brown



GENERAL NOTES:

- 1. PROPERTY IS ZONED RR-1.
A. FRONT YARD SETBACK IS 20 FEET.
B. REAR YARD SETBACK IS 20 FEET.
C. SIDE YARD SETBACKS ARE 10 FEET AND 10 FEET.
D. CORNER LOT SIDE YARD SETBACK IS 10 FEET.
2. LOT COVERAGE IS LIMITED TO 25% OF THE LOT AREA...

IRRIGATION TABLE
LOT IRRIGABLE ACREAGE SHARES
601 1.020 2
602 1.059 2
603 1.391 3
604 1.887 3
605 4.571 8
606 4.498 8
607 1.549 3
608 0.948 2
609 0.828 2
610 0.813 2

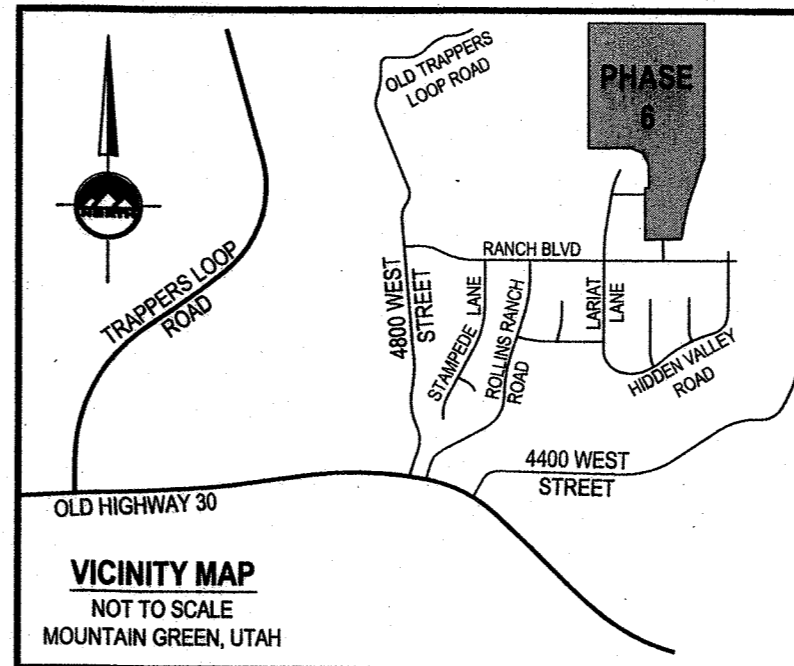
NOTES: UTILITIES SHALL HAVE THE RIGHT TO INSTALL, MAINTAIN, AND OPERATE THEIR EQUIPMENT BELOW GROUND AND ALL OTHER RELATED FACILITIES WITHIN THE PUBLIC UTILITY EASEMENTS IDENTIFIED ON THIS PLAT MAP...

THE PROPERTY OWNER ACKNOWLEDGES THAT HE/SHE IS BUILDING IN A LOCATION THAT IS FAR REMOVED FROM THE PRIMARY MORGAN COUNTY SERVICE AREAS. AS SUCH, THE PROPERTY IS ON NOTICE THAT THERE IS LIMITED ACCESS, INFRASTRUCTURE AND PUBLIC SERVICES IN THE AREA...

ROLLINS RANCH PHASE 6

LOCATED IN THE SOUTHEAST QUARTER OF SECTION 24 TOWNSHIP 5 NORTH RANGE 1 EAST SALT LAKE BASE & MERIDIAN MORGAN COUNTY, UTAH

NOTE: THIS PLAT CONTAINS TWO PAGES SEE SHEET 2 OF 2 FOR DRAWING



SURVEYOR'S CERTIFICATE
I, KEITH R. RUSSELL, do hereby certify that I am a Licensed Land Surveyor, and that I hold certificate No. 164386 as prescribed under laws of the State of Utah...

BOUNDARY DESCRIPTION
Beginning at the Southeast Corner of Rollins Ranch Phase 5 Subdivision at a point on the North line of Rollins Ranch Phase 1 Subdivision, also being on the section line, said point being North 89°19'28" East 519.84 feet along the section line from the South Quarter Corner of Section 24, Township 5 North, Range 1 East, Salt Lake Base and Meridian...

OWNER'S DEDICATION
ROLLINS RANCH PHASE 6

do hereby dedicate for perpetual use of the public streets, and for the perpetual use of public utility companies, all public utility easements shown on this plat as intended for public use, and do warrant, defend, and save the County harmless against any easement or encumbrances on the dedicated streets which will interfere with the County's use, operation, and maintenance of the streets and do further dedicate the easements as shown.

In witness whereof, we have hereunto set our hands this 5th day of June, A.D. 2015.
By: Rulon G. Gardner, Manager
By: Ken C. Gardner, Manager

LIMITED LIABILITY COMPANY ACKNOWLEDGMENT
STATE OF UTAH, County of MORGAN.
On the 5 day of June, A.D. 2015, Rulon G. Gardner personally appeared before me, the undersigned Notary Public, in and for said County of Salt Lake...

LIMITED LIABILITY COMPANY ACKNOWLEDGMENT
STATE OF UTAH, County of MORGAN.
On the 5 day of June, A.D. 2015, Ken C. Gardner personally appeared before me, the undersigned Notary Public, in and for said County of Salt Lake...

CORPORATE ACKNOWLEDGMENT
STATE OF UTAH, County of MORGAN.
On the 3 day of June, A.D. 2015, Randall Guston personally appeared before me, the undersigned Notary Public, in and for said County of Davis...

DEVELOPER
ROLLINS RANCH LLC
90 SOUTH 400 WEST SUITE 330
SALT LAKE CITY, UTAH 84011

MOUNTAIN GREEN SECONDARY WATER CO. APPROVAL
APPROVED THIS 5th DAY OF June, 2015 BY THE MOUNTAIN GREEN SECONDARY WATER COMPANY.

COTTONWOOD MUTUAL WATER COMPANY APPROVAL
APPROVED THIS 2 DAY OF June, 2015 BY THE COTTONWOOD MUTUAL WATER COMPANY.

MORGAN COUNTY SURVEYOR
I HEREBY CERTIFY THAT THE MORGAN COUNTY SURVEYOR'S OFFICE HAS REVIEWED THIS PLAT FOR MATHEMATICAL CORRECTNESS, SECTION CORNER DATA AND FOR HARMONY WITH LINES AND MONUMENTS OF RECORD IN THE MORGAN COUNTY OFFICES...

COUNTY ATTORNEY'S APPROVAL
APPROVED THIS 24th DAY OF June, 2015 BY THE MORGAN COUNTY ATTORNEY.

COUNTY ENGINEER'S APPROVAL
APPROVED THIS 22 DAY OF June, 2015 BY THE MORGAN COUNTY ENGINEER.

COUNTY COMMISSIONER'S APPROVAL
APPROVED THIS 24 DAY OF June, 2015 BY THE MORGAN COUNTY COMMISSIONERS.

June 1, 2015
Date
Keith R. Russell
License No. 164386

ROLLINS RANCH PHASE 6
LOCATED IN THE SOUTHEAST QUARTER OF SECTION 24 TOWNSHIP 5 NORTH RANGE 1 EAST SALT LAKE BASE & MERIDIAN MORGAN COUNTY, UTAH
MORGAN COUNTY RECORDER
ENTRY NO. 135286
PAID \$72.00 FILED FOR RECORD AND RECORDED THIS 24 DAY OF June 2015 AT 4:44 IN BOOK 320 OF OFFICIAL RECORDS PAGE 889

MOUNTAIN GREEN SEWER DISTRICT APPROVAL
APPROVED THIS 20th DAY OF June, 2015 BY THE MOUNTAIN GREEN SEWER DISTRICT.

PLANNING COMMISSION APPROVAL
RECOMMENDED FOR APPROVAL THIS 26 DAY OF Sept 2015 BY THE COUNTY PLANNING COMMISSION.

COUNTY ENGINEER'S APPROVAL
APPROVED THIS 22 DAY OF June, 2015 BY THE MORGAN COUNTY ENGINEER.

COUNTY COMMISSIONER'S APPROVAL
APPROVED THIS 24 DAY OF June, 2015 BY THE MORGAN COUNTY COMMISSIONERS.

COUNTY DEPUTY CLERK
Attest: Cheryl Adbe
County Deputy Clerk



LAYTON
1485 West Hillfield Rd.
Suite 204
Layton UT 84041
Phone: 801.547.1100
Fax: 801.593.6315
www.ensgnutah.com

SALT LAKE CITY
Phone: 801.255.0529
TOOLEE
Phone: 435.843.3590
CEDAR CITY
Phone: 435.865.1453
RICHFIELD
Phone: 435.590.0187

SHEET 1 OF 2
PROJECT NUMBER: 4083W
MANAGER: BELDER
DRAWN BY: MELMER
CHECKED BY: K. RUSSELL
DATE: 4/02/14

MORGAN COUNTY RECORDER
By: Brenda D. Johnson
MORGAN COUNTY RECORDER
By: Chris Brown
DEPUTY RECORDER

Printed: 7/1/2015 10:00 AM
File: 172_00_Credit Card
Printed: 7/1/2015 10:00 AM
File: 172_00_Credit Card
MORGAN COUNTY RECORDER
BY: CHRIS BROWN